



# **Texas Center for Health Disparities**

**Jamboor K. Vishwanatha, Ph.D.**

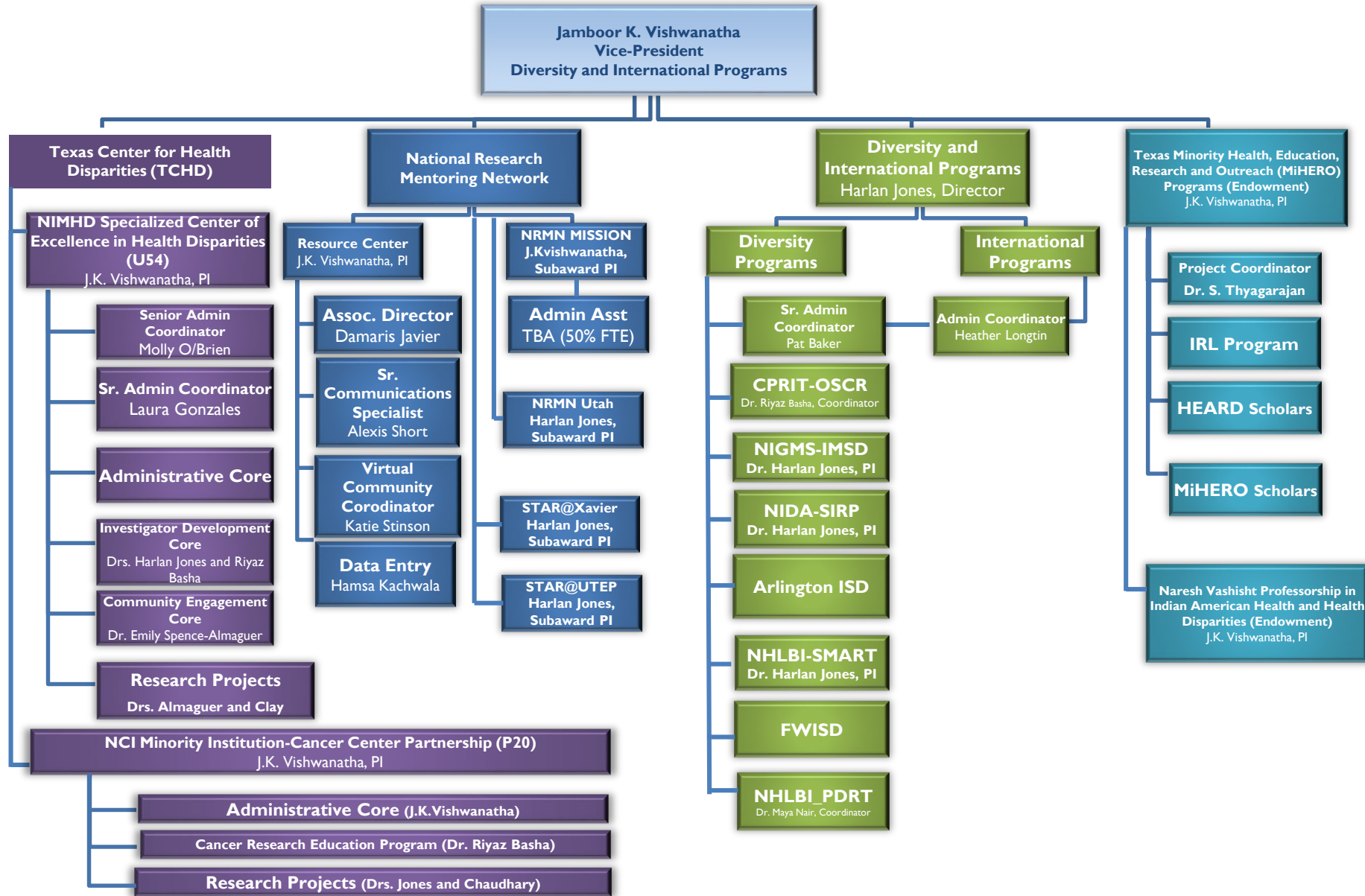
**Founding Director**

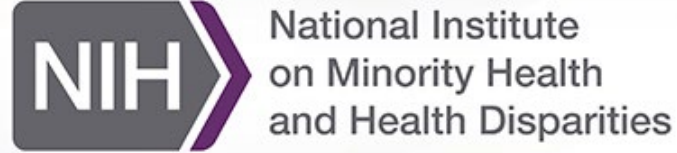
**Regents Professor and Vice-President**

Supported by grant numbers U54MD006882 and S21MD012472 from the National Institute on Minority Health and Health Disparities, National Institutes of Health



# Center for Diversity and International Programs (CDIP)





CANCER PREVENTION & RESEARCH  
INSTITUTE OF TEXAS



# Texas Center for Health Disparities

---



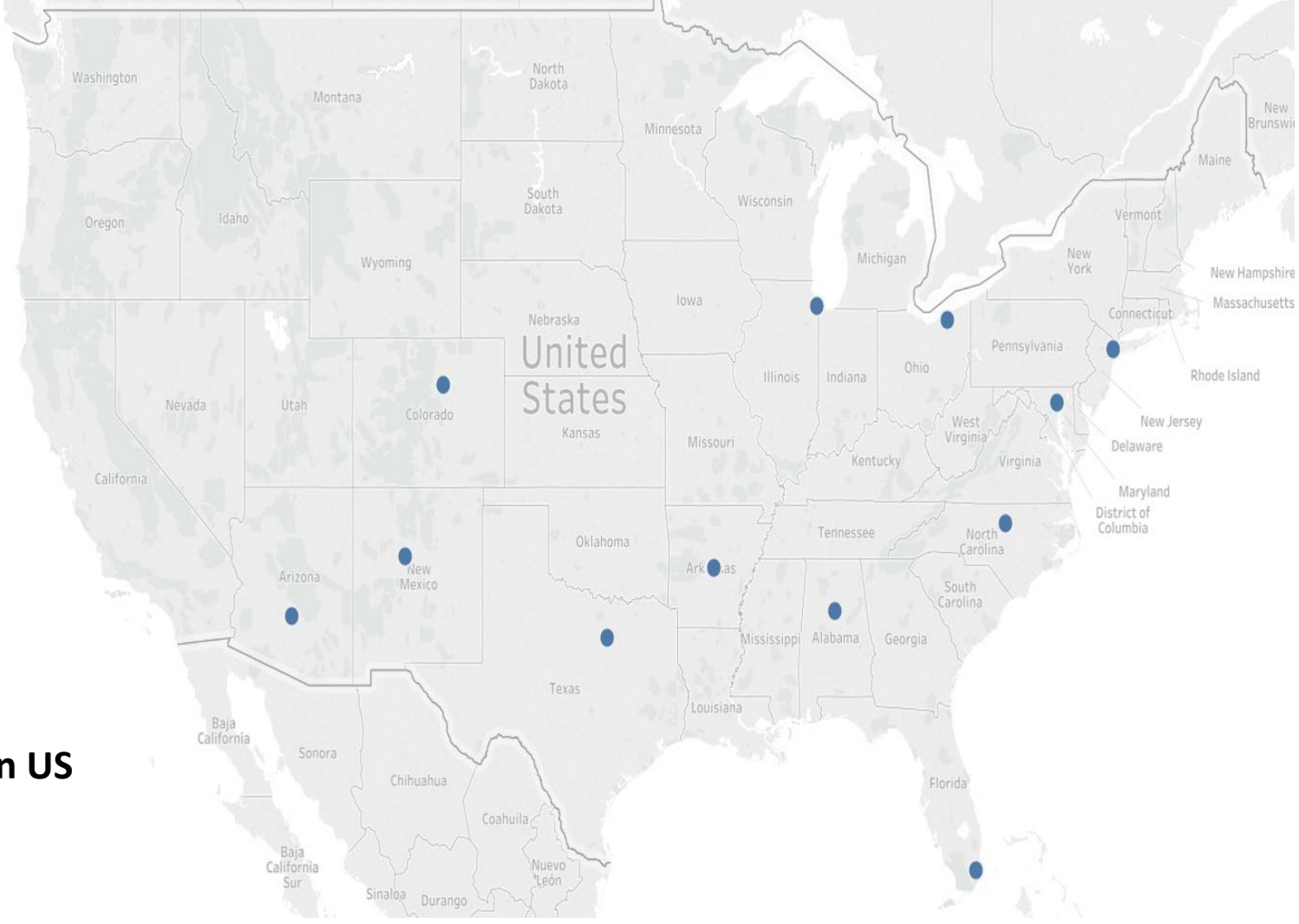
Established in 2005 as an **EXPORT Center for Health Disparity Research**, funded by a grant from the National Center for Minority Health and Health Disparities.

Designated as a **Center of Excellence (P20)** for Health Disparity Research in 2012 by National Institutes on Minority Health and Health Disparities of the National Institutes of Health

In 2017, designated as a **Specialized Center of Excellence (U54) in Health Disparities**

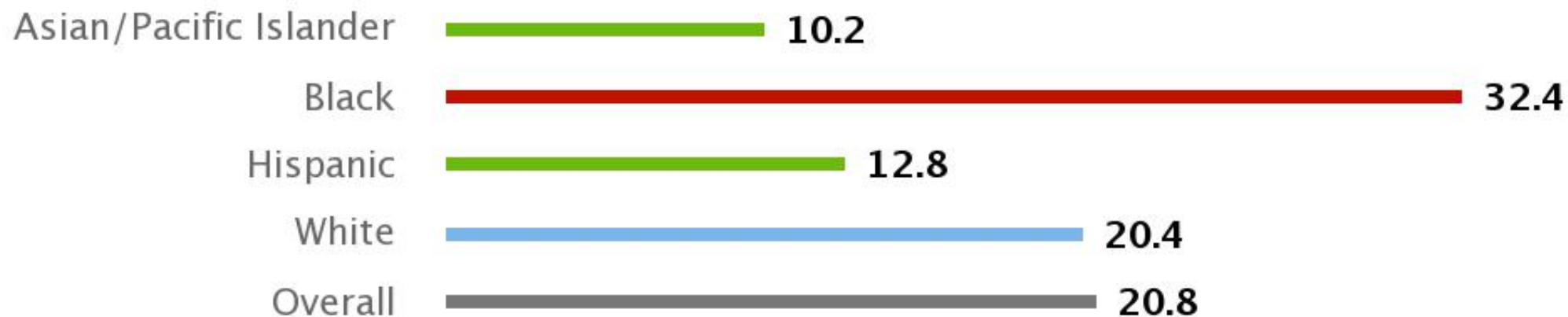
Focus of the Center is on **Women's Health Disparities**

# NIMHD Specialized Centers of Excellence in Minority Health and Health Disparities



- TCHD is one of 12 in US
- Only one in Texas

## Age-Adjusted Death Rate due to Breast Cancer by Race/Ethnicity County: Tarrant



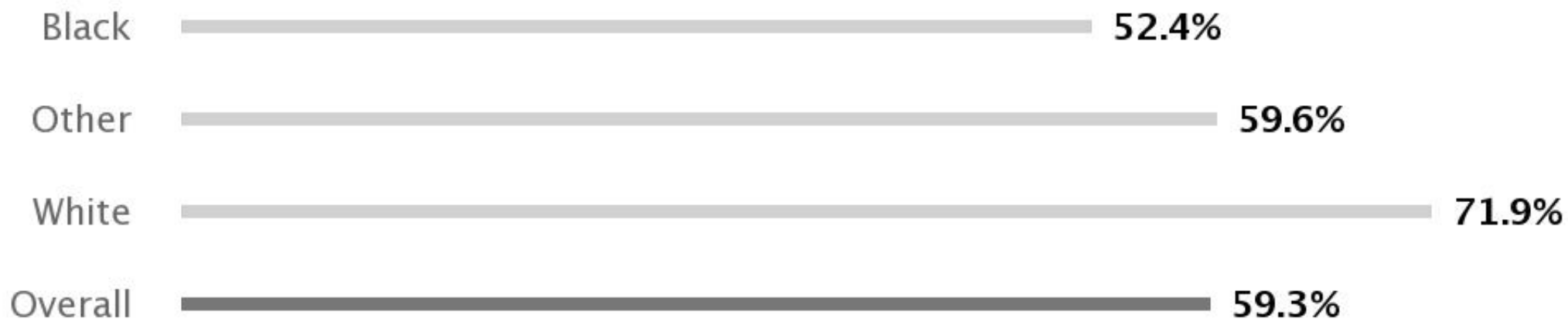
Source: National Cancer Institute (2012–2016)

### Cervical Cancer Incidence Rate by Race/Ethnicity County: Tarrant



Source: National Cancer Institute (2012–2016)

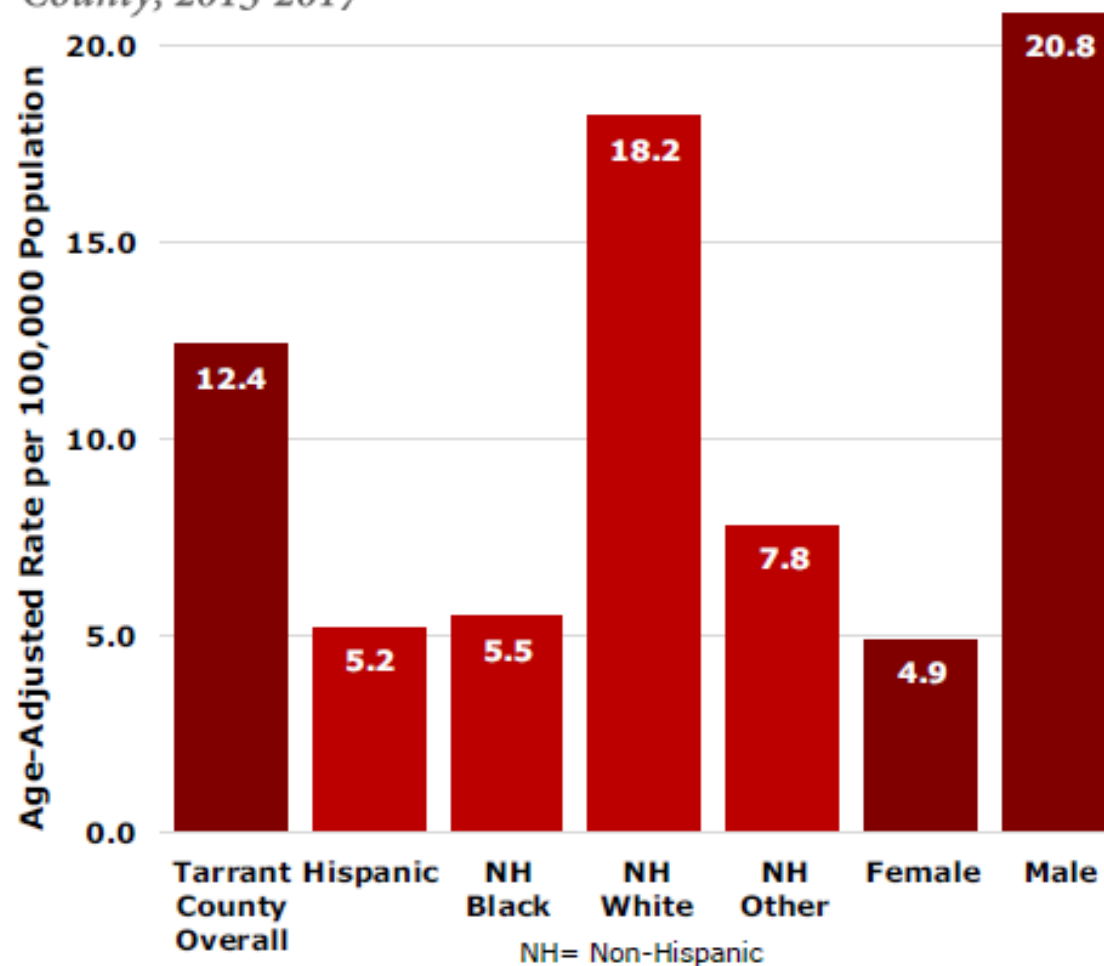
## Mothers who Received Early Prenatal Care by Race/Ethnicity County: Tarrant



Source: Texas Department of State Health Services (2015)



Figure 4. Suicide rates by race/ethnicity and gender, Tarrant County, 2015-2017





# Health Disparity Populations

- Health disparity populations include:
  - racial/ethnic minorities
  - less privileged socio-economic status
  - underserved rural residents, and/or
  - others subject to discrimination
- Populations have poorer health outcomes often attributed in part to social disadvantage, and being underserved in the full spectrum of health care



# Mechanisms Leading to Health Disparities

**Individual Behaviors, Lifestyle, Beliefs, and Response to Stress:** racism, adverse conditions, food insecurity, witness to violence, immigrant, LEP

**Biological processes, Genetics and Epigenetics:** Earlier age of onset, gene variant, metabolic differences, susceptibility, faster progression or greater severity

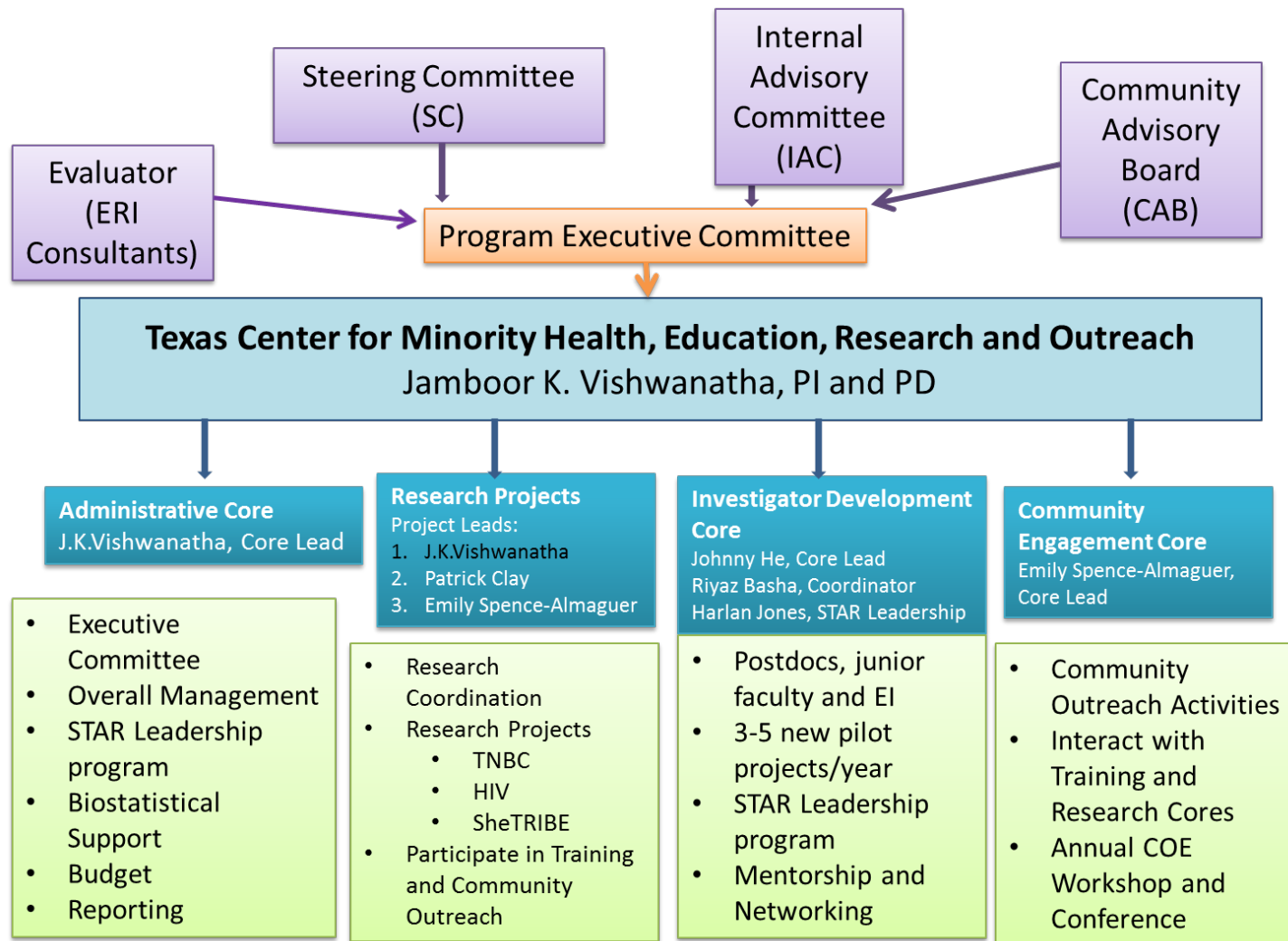
**Physical and Cultural Environment:** place, social interactions, network, community cohesion

**Clinical Events and Health Care:** Differential treatments, poor communication, adverse events to medications, falls, progression of disease, access, use/abuse of appropriate services end of life care

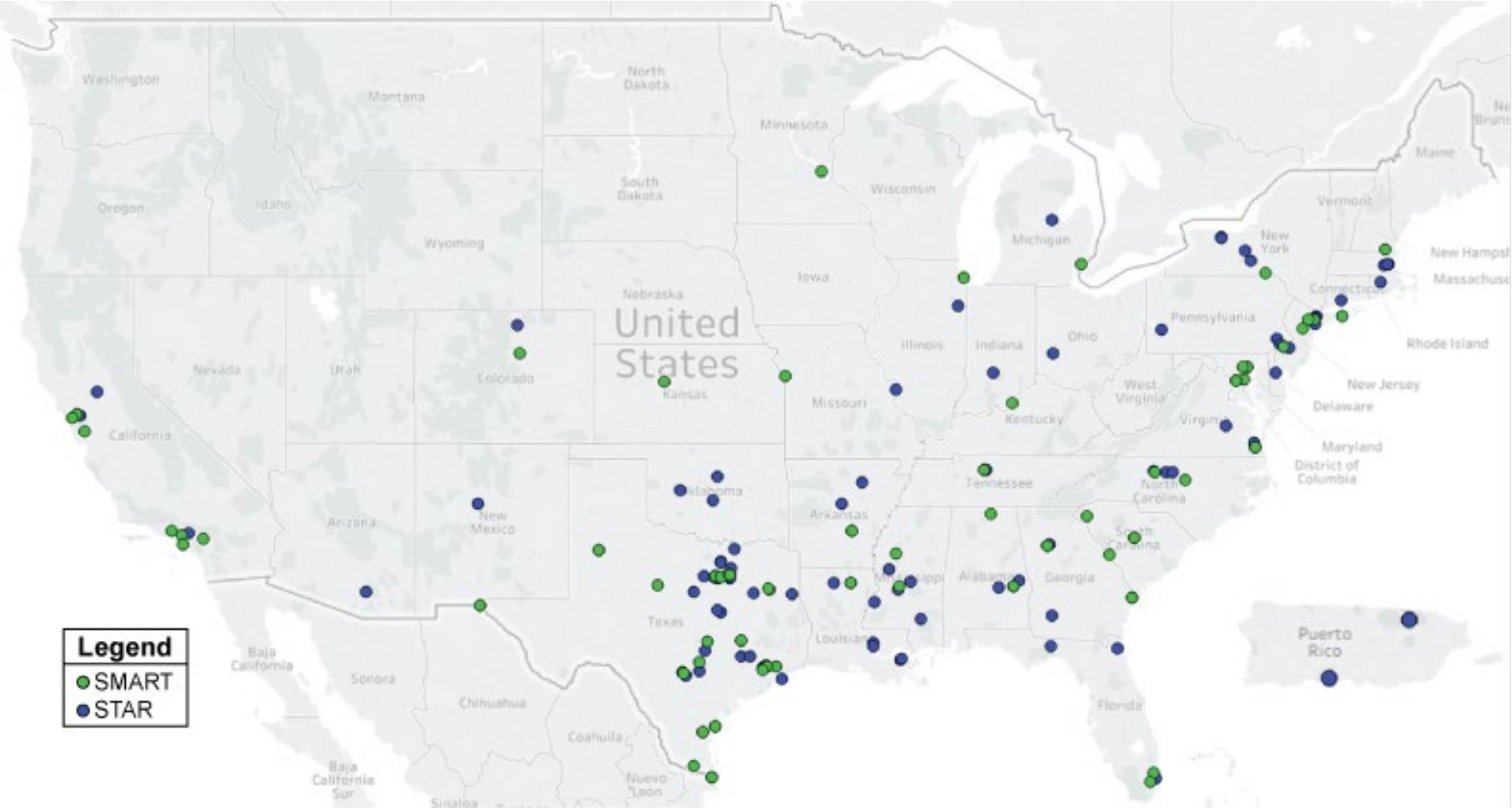
**Table 1: NIMHD Minority Health and Health Disparities Research Framework**

Domains of Influence		Levels of Influence			
		Individual	Interpersonal	Community	Societal
Biological	<b>LIFECOURSE</b>	Biological Vulnerability & Mechanisms ●	Caregiver-Child Interaction Family Microbiome	Community Illness Exposure Herd Immunity ●	Sanitation Immunization Pathogen Exposure
Behavioral		Health Behaviors Coping Strategies ● ●	Family Functioning School/Work Functioning	Community Functioning ●	Policies & Laws
Physical/Built Environment		Personal Environment	Household Environment School/Work Environment	Community Environment Community Resources ● ● ● ●	Societal Structure
Sociocultural Environment		Sociodemographics Limited English Cultural Identity ● ● Response to Discrimination	Social Networks Family/Peer Norms ● ● Interpersonal Discrimination	Community Norms Local Structural Discrimination	Societal Norms Societal Structural Discrimination
Healthcare System		Insurance Coverage ● Health Literacy Treatment Preferences	Patient-Clinician Relationship ● Medical Decision-Making	Availability of Health Services ● ● Safety Net Services	Quality of Care HealthCare Policies
Health Outcomes		Individual Health	Family & Organizational Health	Community Health	Population Health

● Research Project 1     
 ● Research Project 3     
  Proposed COE  
● Research Project 2     
 ● CEDC



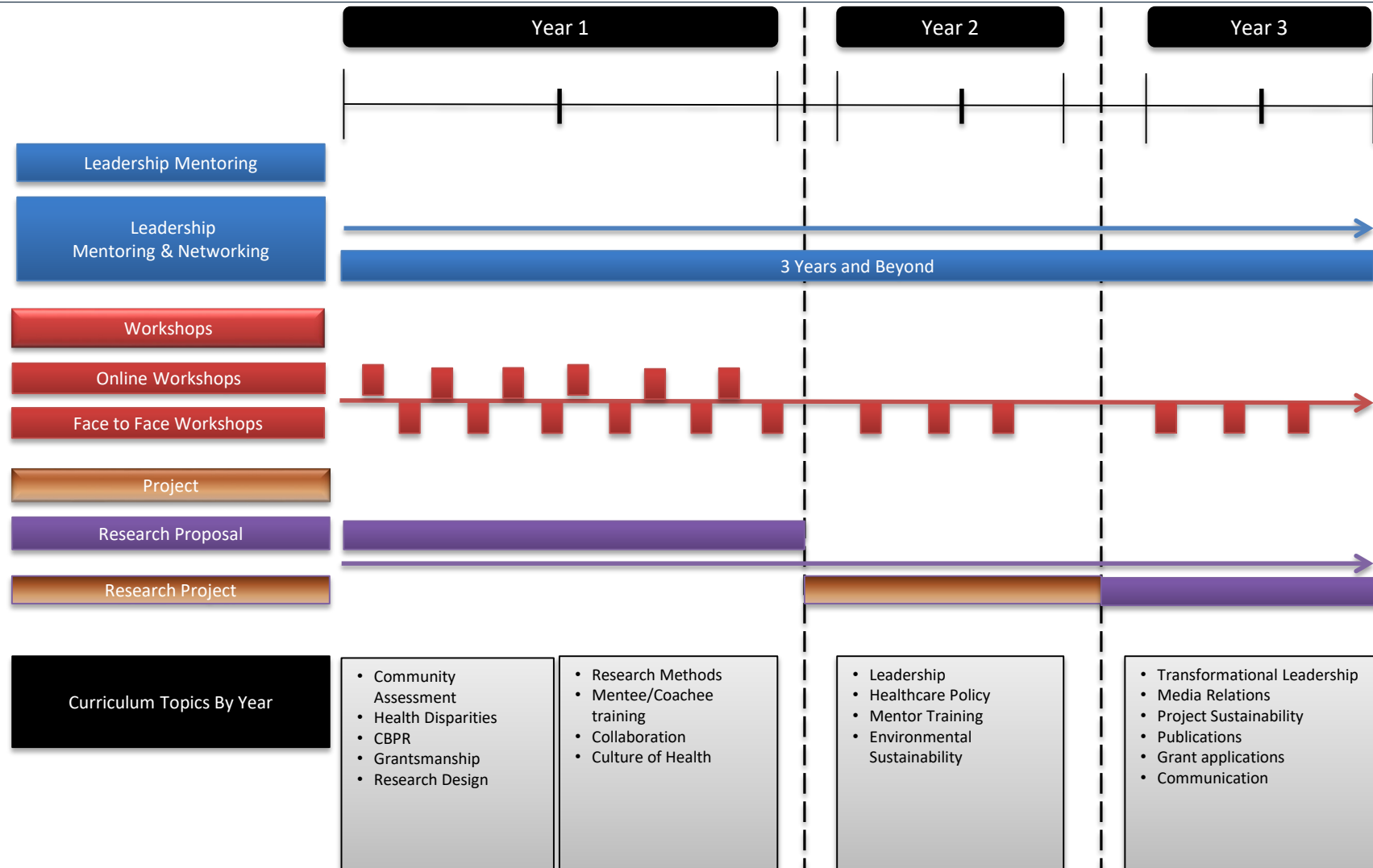
# Steps Toward Academic Research (STAR) Program



# STAR Leadership Program

- A multiyear program designed to provide training in grantsmanship, leadership, mentorship and coaching, institutional and financial support. Scholars will receive rigorous long-term training for developing competitive health disparity research projects.
- Mentorship team consisting of a subject matter expert (scientific mentor), a community stakeholder from the Community Advisors on Research Design and Strategies (CARDS) subgroup of CED Core, and a coach.
- Strong institutional support for continuing pilot projects during third year of scholars' program.
- A competitive pilot project and renewal program that motivates scholars' accountability and productivity to design high quality research projects.
- Sustainability of the program beyond the pilot project period. Scholars continuously receive support for publications, networking and professional development through our Center for Excellence (COE) resources and National Research Mentoring Network (NRMN).

# STAR Leadership Program





# Previous Conference Themes and Keynote Speakers



	Theme	Keynote Speaker
14th (2019)	<b>Social Epigenomics and Health Disparities</b>	<b>Alexandra Shields, PhD.</b> , Director, Harvard/MGH Center on Genomics, Vulnerable Populations and Health Disparities <a href="#">Epigenetic signals of how social disadvantage 'gets under the skin': a challenge to the public health community</a>
13th (2018)	<b>Diversity in the Era of Precision Medicine</b>	<b>Adrienne White-Faines, MPA, FACHE</b> , Chief Executive Officer, American Osteopathic Association (AOA) <a href="#">Diversity in the Medical Profession</a>
12th (2017)	<b>Evidence-Based Approaches to Reducing Cancer Health Disparities</b>	<b>Rebecca Garcia, PhD</b> , Chief, Prevention and Communication Officer, Cancer Prevention and Research Institute of Texas (CPRIT). <a href="#">From Awareness to Action: Addressing Cancer Health Disparities</a>
11th (2016)	<b>Health Communities, Healthy Families: Broadening our Perspective from Preconception to Adulthood</b>	<b>Michael McAfee, EdD, MPA</b> , Vice President for Programs at PolicyLink and Co-Director for Promise Neighborhoods Institute <a href="#">The Work of Our Generation: Creating Communities of Opportunity from Cradle to Career</a>
10th (2015)	<b>Basic, Clinical and Community Approaches to Solving Obesity</b>	<b>Ken Resnicow, PhD</b> , Irwin M. Rosenstock Collegiate Professor, University of Michigan, School of Public Health Obesity Counseling in Primary Care: Results of the BMI2 Project
9th (2014)	<b>The Role of Genomics in Eliminating Health Disparities</b>	<b>Elaine R. Mardis, PhD</b> , Professor of Genetics and Molecular Microbiology; Co-Director, The Genome Institute at Washington University School of Medicine <a href="#">NGS: The Disruption of Genomics and Medicine</a>
8th (2013)	<b>Intersection of Smoking, HIV/AIDS and Cancer</b>	<b>Jack Burkhalter, PhD</b> , Clinical Health Psychologist, Smoking Cessation in Cancer and At-Risk Populations, Memorial Sloan-Kettering Cancer Center <a href="#">The Intersection of HIV/AIDS, Cancer and Smoking</a>
7th (2012)	<b>Battling Breast Cancer Disparities: Frontline Strategies</b>	<b>Amelie Ramirez, DrPH</b> , Director of the Institute for Health Promotion Research at the University of Texas Health Science Center at San Antonio <a href="#">Navigating Latinas with Breast Screening Abnormalities to Diagnosis: The Six Cities Study</a>



THE UNIVERSITY *of* NORTH TEXAS  
HEALTH SCIENCE CENTER *at* FORT WORTH