



Division of Research and Innovation

New Faculty Orientation

Brian Gladue, PhD

Vice President for Research and Innovation

“Home Base” for Discovery

Assist faculty, staff and students with All Things Research:

- Assist researchers with Funding (before, during, after)
- Regulatory Issues (Compliance)
- Animal Research and other “Discovery” Facilities
- Core Research Laboratories
- Guidance for Research Ethics and Integrity
- Provide overall support / coordination of research campus-wide
- Help turn Discoveries into Solutions

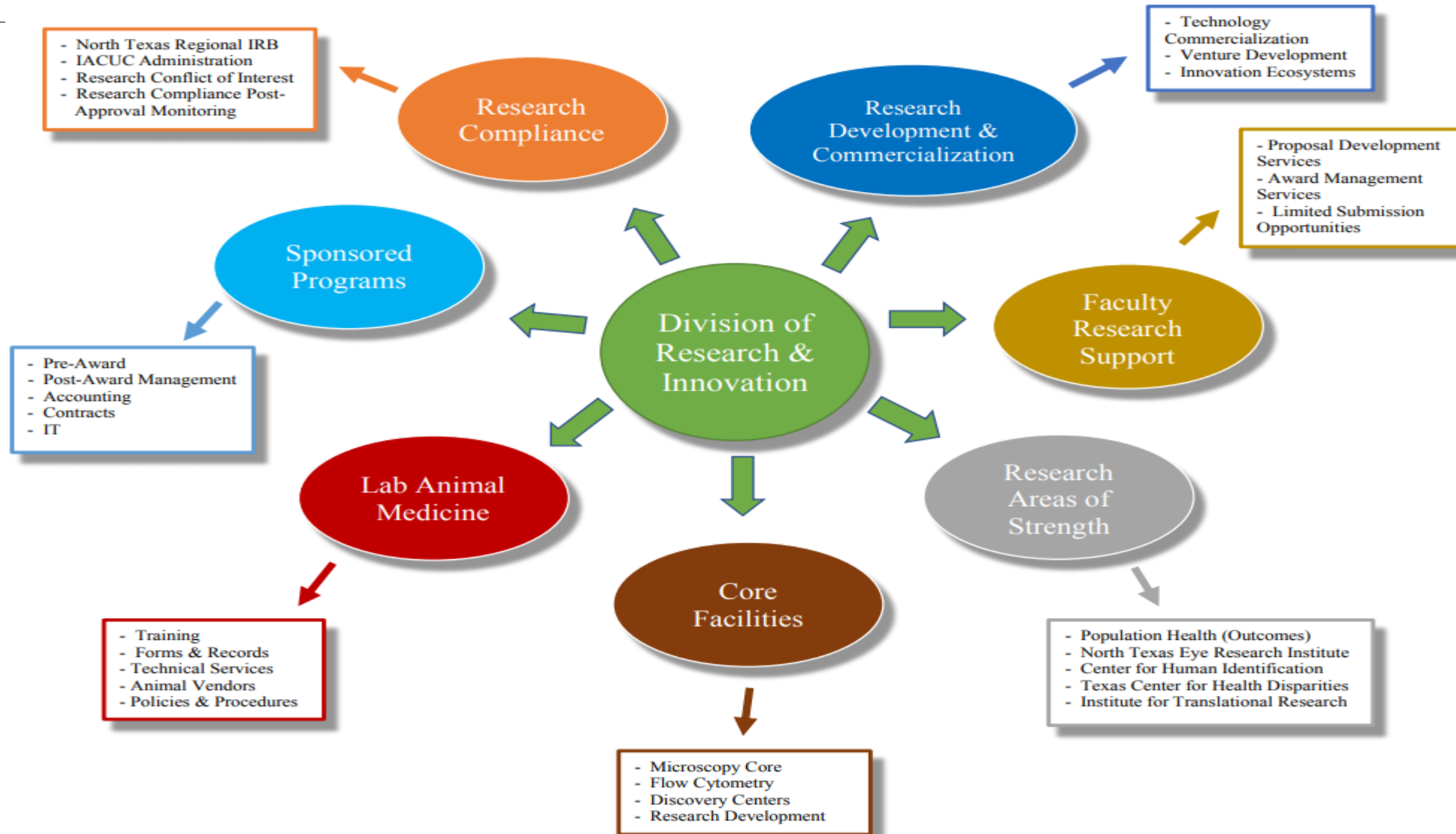
DRI Units



- Core Labs - Research Instrumentation Core Facilities**
- DLAM - Department of Laboratory Animal Medicine**
- EC/IC - Export Control / International Compliance**
- FRST - Faculty Research Support Team**
- ORC - Office of Research Compliance (IACUC, IRB, RCOI)**
- OSP - Office of Sponsored Programs**
- ORDC - Office of Research Development & Commercialization
("Innovation Ventures")**
- RISA - Research Information Systems & Analytics**

Plus... VPR-designated Centers and Institutes

Who is the Division of Research & Innovation?



• **Proactive Research Risk Management**

- Create a culture of compliance and accountability
- Improve training, knowledge and communication
- Solidify institutional support and infrastructure

Enhance the Strategic Research Enterprise at our One University

- Expand research development programs
- Partnership involving Research Administration and Researchers
- Facilitate research commercialization
- *Focus on Research Areas of Strength*

Transformative Research Risk Management



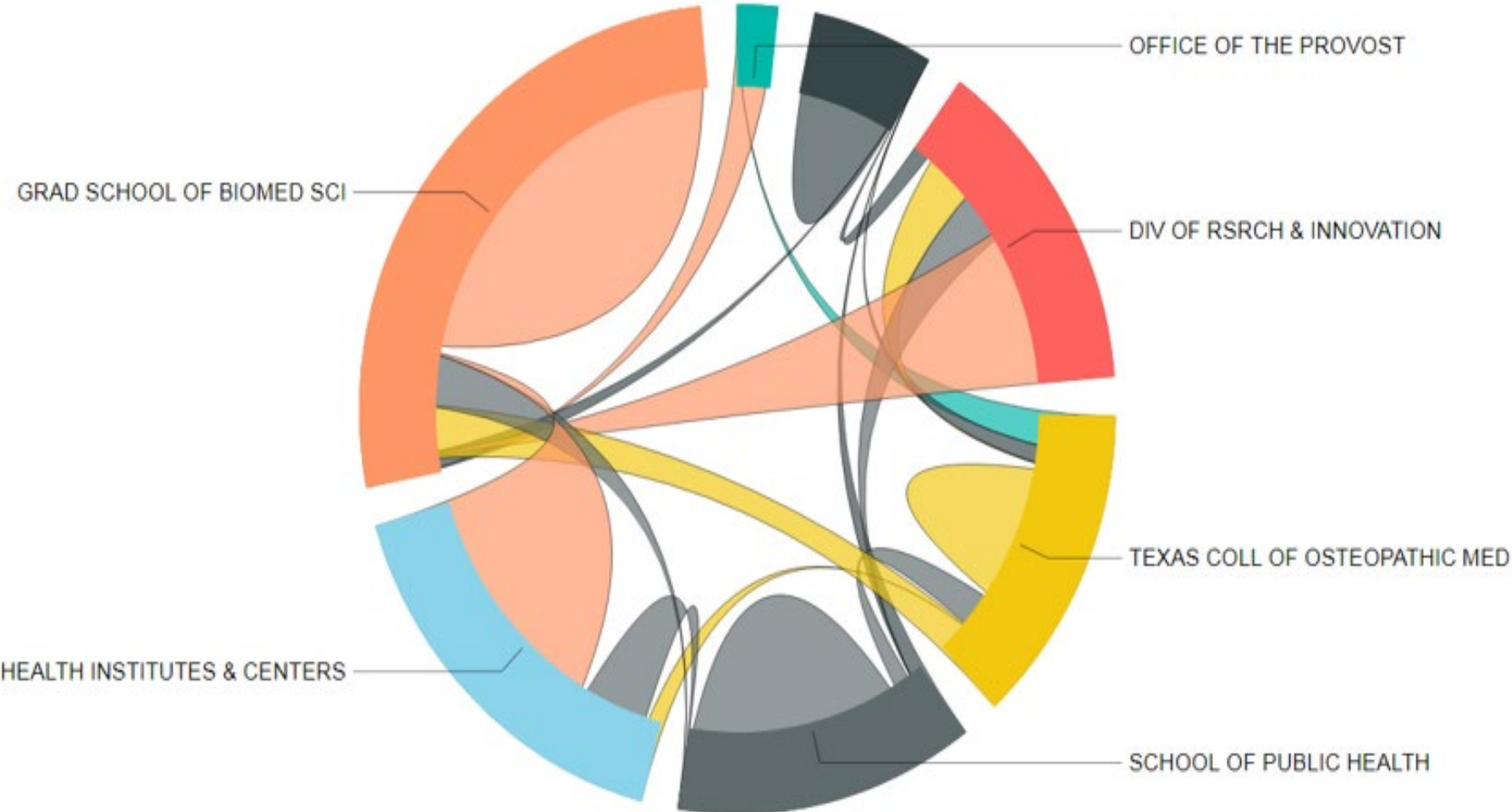
- Coordinate Research Compliance with Institutional Compliance
- Faculty Research Support Team (FRST)
- Improved and expanded training, knowledge and communication
- Institution-wide **Export Control Officer**
- Compliance Committees integrated with faculty and staff
- North Texas Regional IRB: JPS Health Network, TCPH, UNT-Dallas, Cook Children's Hospital


Enhance the research enterprise at HSC in core Research Areas of Strength

- Center of Human Identification
- Texas Center for Health Disparities
- Institute of Translational Research
- North Texas Eye Research Institute

Transformative Collaboration

Count of Projects by PI's College/Division to Co-I College/Division



A large photograph of Jin Liu, a woman with long dark hair and glasses, smiling in a laboratory setting. In the background, a computer monitor displays a colorful molecular model.

Researcher hopes to make gene-editing device safer and more precise

Jin Liu, UNT System College of Pharmacy professor, hopes to find a way to cut into the DNA with specificity

Research and Innovation

[North Texas Regional IRB](#)

[Lab Animal Medicine](#)

[Research Compliance](#)

[Sponsored Programs](#)

[Research Development and Commercialization](#)

[Faculty Research Support Team](#)

[Research Infrastructure](#)

[Our Research Strengths](#)



Transformative Innovation Ventures



Entrepreneurship and innovation at UNTHSC

May 24, 2019



UNT Health Science Center has embarked on an ambitious campaign to invest in entrepreneurship and to develop an innovative mindset for its students, faculty and staff.



innovate
fort worth
UNT HEALTH SCIENCE CENTER

TECHFWSM



Transformative Innovation Ventures



Infrastructure Support

- Microscopy, Flow Cytometry, Genomics, Discovery Center Core Labs
- Coming Soon! Research Imaging Centers (Human MRI/PET; Animal MRI/PET/CT)

Innovation Support

- Technology Commercialization and IP
- Entrepreneurship and Mentoring
- Ecosystem Development



Summary: Connecting the dots

Precision Medicine ... Telemedicine Healthcare ... Enhanced Medical Education

Personalized HealthCare ... Augmented Reality Diagnosis ... Quality of Life

Health Outcomes Research ... Community Engagement ... Health Disparities

Diverse Research Workforce ... Pharmacogenomic Therapy ... Wellness Lifestyle

Primary Care ... Preventive Diagnoses ... Healthy Aging ... Lifelong Learning

Molecular Autopsies ... Missing Persons ... Human Trafficking ... Precision Medicine



THE UNIVERSITY *of* NORTH TEXAS
HEALTH SCIENCE CENTER *at* FORT WORTH