



THE UNIVERSITY *of* NORTH TEXAS  
HEALTH SCIENCE CENTER *at* FORT WORTH



# Division of Clinical Innovation

Correctional Medicine

HSC Health

Interprofessional Education and Learning

SaferCare TX

Simulation Program

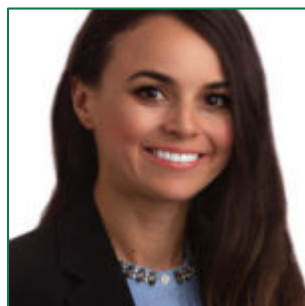
# Interprofessional Education and Practice

*We teach collaborative practice competencies within the context of interprofessional teams with students, staff, faculty and clinicians to improve quality and safety in the care of patients and populations.*

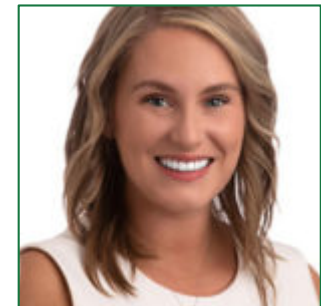
## Your IPE Department Team



David Farmer PhD, LPC, LMFT, FNAP  
Director  
[David.Farmer@unthsc.edu](mailto:David.Farmer@unthsc.edu)



Cynthia Carroll, MA, LPC  
Assistant Director  
[Cynthia.Carroll@unthsc.edu](mailto:Cynthia.Carroll@unthsc.edu)



Cailyn Alexander  
Executive Assistant  
[Cailyn.Alexander@unthsc.edu](mailto:Cailyn.Alexander@unthsc.edu)

# 12 Health Professions Learn About, From and With Each Other in Preparation for Collaborative Practice



## UNTHSC students from:

- medicine,
- pharmacy,
- physician assistant,
- physical therapy,
- public health and health administration
- biomedical sciences

## Have an opportunity to work alongside students from four partnering institutions:

- nursing,
- social work,
- speech language pathology,
- athletic training
- dietetics

## Our IPE Partnering Institutions



Texas Wesleyan  
UNIVERSITY

TEXAS WOMAN'S  
UNIVERSITY™



UNIVERSITY OF  
TEXAS  
ARLINGTON

# IPE and You



- ❖ Visit our website at <https://www.unthsc.edu/interprofessional-education/>
- ❖ Participate as a faculty facilitator for an IPE event (We'll train you!)
- ❖ Sign up for the IPE Faculty Development Microcredential
- ❖ Partner with an interprofessional faculty colleague to create a new IPE opportunity within your course
- ❖ Model appropriate interprofessional collaboration within your clinical practice helping to enhance the interprofessional learning environment for our students

Who we are



A collaborative, interprofessional team of subject matter experts and thought leaders that provide patient safety solutions throughout Texas and the nation

What we do



We empower current and future health care professionals and our community through patient safety education and awareness

Why we do it!



Our Vision: To continuously improve communities through patient safety innovation

# SaferCare Texas-Meet our Team!



Leslie Allsopp MSN, MPH, PhD  
Project Manager



Clara Ramirez MPH, CPH  
Project Coordinator



Subhash Aryal PhD  
Senior Fellow



Katie Shanklin, MA  
Associate Director



Jeff Beeson DO, RN  
DO, RN, EMT-Paramedic  
Clinical Executive

WE HAVE ONE GOAL:  
Challenge traditional Thinking to  
eliminate preventable harm



John Sims MSN, RN, CNL  
Director



LeeAnn Cunningham  
Assistant Director,  
Strategic Operations

Tracy Chamblee PhD, APRN,  
PCNS-BC, AE-C, CPHQ, CPPS  
Clinical Executive



Kate Taylor DNP, CPPS  
Clinical Executive



Teresa Wagner DrPH, MS, CPH  
RDLD, CPPS  
Clinical Executive



Rafia Rasu PhD, MBA, MPharm  
Health Services Outcomes  
Researcher



David Farmer  
PhD, LPC, LMFT



# Major Accomplishments

## SaferCare Texas

- **Patient Safety Organization(PSO)**-Assembling the **Nation's FIRST** AHRQ Certified Medical Office PSO
  - Medical Office Patient Survey deployed
  - Clinic participants(29 Clinics)to select one process improvement project from survey results
- **Rural Health Literacy** (Cultural/Linguistic Care) in Mt. Pleasant, TX....**and beyond**
- **Microcredentials**-Mental Wellness Coaches and Dementia Certified Coaches)
  - Ten students to complete MWC and numerous DCC by EOFY.
- **Emergency Preparedness Learning Video**-
  - Crashbags in Medical Offices
- **Rural Community Healthcare access**-Telehealth services-Pottsboro Library
- Judged 12 RAD21 Posters and selected three winners!
- And much, much more!!

## Asthma411

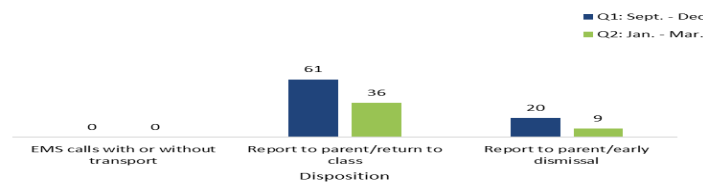
### What?

Provides asthma education, resources and medications:

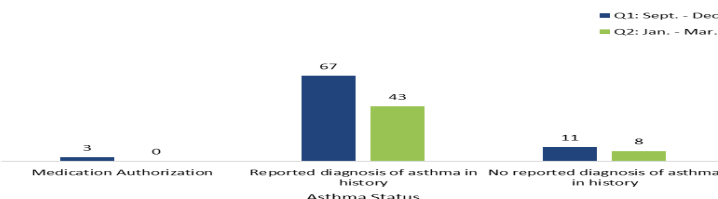
- 11 Independent School Districts
- 378 campuses
- Expanding to Parker County this summer!

### Outcomes

Disposition comparison after receiving a quick-relief treatment in Q1 (n=81) and Q2 (n=45)



Asthma status comparison of students receiving a quick-relief treatment in Q1 (n=81) and Q2 (n=51)



Please visit our websites:

[www.safercaretexas.org](http://www.safercaretexas.org)

[www.asthma411.org](http://www.asthma411.org)



# Simulation Program

---



**Creating Unique learning experiences for  
students and life long learners.**

# Simulation Program



- Hands-on learning
- Procedural Skills
- Medical Interviewing with Standardized Patients
- Clinical Decision Making
- Interprofessional experiences

# Simulation Program

Future –

- New Regional Simulation Center – Spring 2022
- Faculty Development in Simulation
- Opportunities with community partners





***Thanks for letting us welcome you to the HSC team. You're going to love it!***

hsc ™