



Texas College of Osteopathic Medicine

EST. 1970

Frank Filipetto, DO, FCOFP

Dean and Everett Endowed Professor of Family Medicine

PROGRAMS

- Doctor of Osteopathic Medicine (DO)
- Dual Degree: DO/MS
- Dual Degree: DO/PhD
- Dual Degree: DO/MPH
- Graduate Certificate in Academic Medicine

DEPARTMENTS

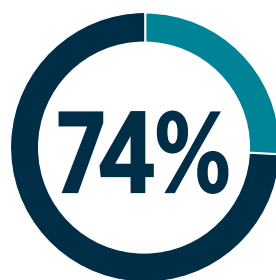
- Family and Osteopathic Manipulative Medicine
- Internal Medicine and Geriatrics
- Pediatrics and Women's Health
- Medical Education



TCOM has consistently placed more graduates into primary care than any other medical school in Texas.

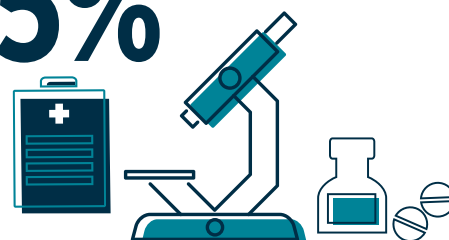


TCOM graduates who choose to complete their residency in Texas



TCOM graduates involved in the rural medicine program who are now practicing in primary care

25%



TCOM students who conduct an elective research project in biomedical sciences, patient-oriented clinical studies or health services and policy