

Mediasite Quizzes

A new feature in MyMediasite allows quiz questions to be added and overlaid in Mediasite presentations. When you add a quiz question, Mediasite will automatically pause the video and have the student answer questions. The video will continue after the questions have been answered. Mediasite can provide a spreadsheet of all student responses and percentages of correct answers.

Please note: at this time, there is no direct integration of answers from Mediasite Quizzes into Canvas. To enter Quiz results into your Canvas gradebook, you will manually need to enter responses.



The screenshot displays the MyMediasite user interface. At the top, there is a navigation bar with 'Home', 'Moderation', and 'Add Media' buttons. The main content area is divided into three sections: a left sidebar, a central video player, and a right-hand menu. The sidebar shows the user's name 'Brandon' and options for 'My Presentations', 'My Drafts', 'Channels', and 'Shared Folders'. The central video player shows a presentation slide with a play button. The right-hand menu, under 'OWNED BY Brandon', includes options like 'Watch', 'Edit', 'View Analytics', 'Publish', 'Copy To', 'Move To', 'Edit Video', and 'Edit Slides'. The 'Edit Quizzes' button is highlighted with a red arrow. Below the video player, there are tabs for 'Information', 'Delivery', 'Actions', and 'Annotate'. The 'Information' tab is active, showing fields for 'TITLE' (Unnamed Presentation), 'DESCRIPTION' (No Description), 'TAGS' (No Tags), and 'LINKS'. On the right side of the 'Information' tab, there are sections for 'RECORDED ON' (May 8, 2018 4:53 PM), 'UPLOADED ON' (May 8, 2018 4:55 PM), and 'STATISTICS' (2 Views).

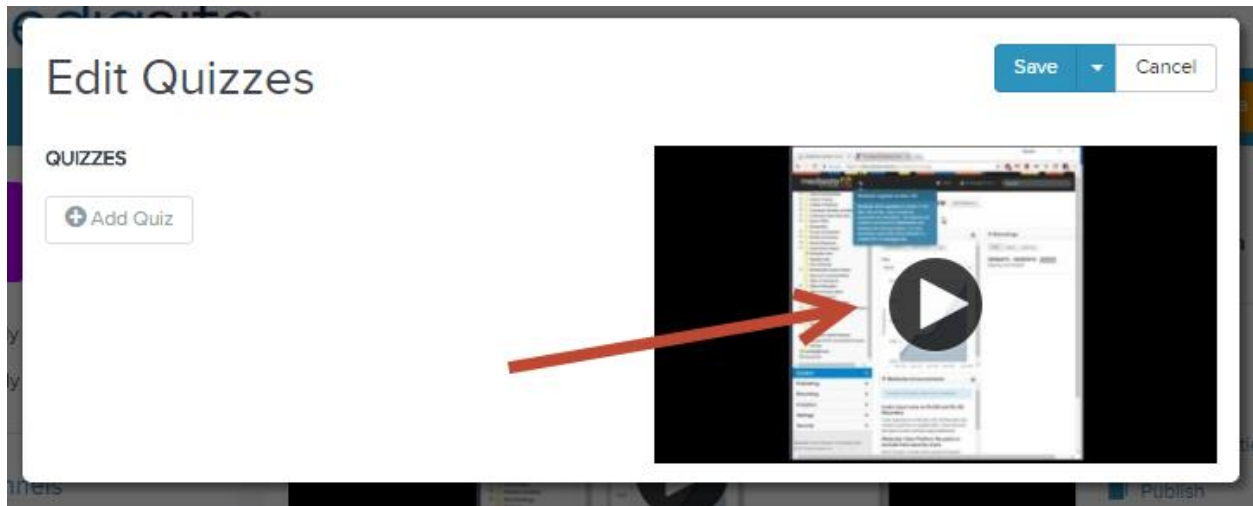
Within MyMediasite, click the **Edit Quizzes** button.

The screenshot shows the 'Create Quizzes' interface. At the top, there is a blue header with the text 'Create Quizzes'. Below this is a section titled 'General Settings'. Under 'Quiz Type', there are three buttons: 'Study Guide' (highlighted with a blue border), 'Assessment' (with a checked checkbox), and '% Scored' (with a percentage symbol). Below these are two columns of checkboxes: the first column has 'Show users their score', 'Show users their correct answers', and 'Show users results after each quiz' (all checked); the second column has 'Require users to submit their answers' (unchecked), 'Allow answer edits after submission' (checked), and 'Randomly order answer choices' (checked). Below the checkboxes is a section titled 'Introduction Screen'. It contains a 'Title' text box with the placeholder text 'Unnamed Presentation' and a 'Description' text box with the placeholder text 'Description'. At the bottom right, there are two buttons: 'Next' (in a blue box) and 'Cancel'.

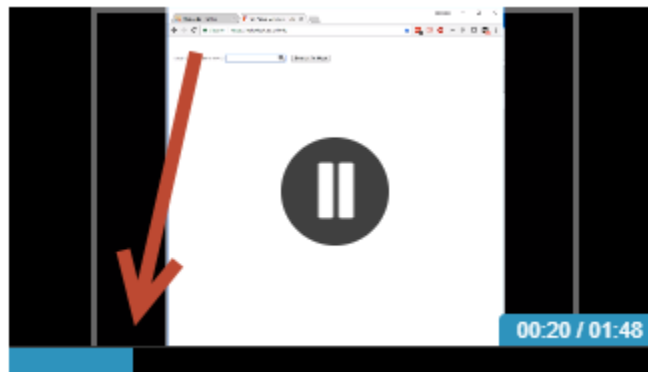
There are three types of Quizzes. Here are the main differences:

- **Study Guide:** This allows students to view their score and all correct answers after they've answered the questions. Students can also choose whether or not to submit their responses to be graded.
- **Assessment:** This allows students to view their score after they've answered the questions, but does not show the students the correct answers. Users can edit their answers after submission.
- **Scored:** This allows students to view their score after they've answered the questions, but does not show the students the correct answers. Users cannot edit their answers after submission.

Whatever you enter in the **Title** and **Description** text boxes will appear when a student opens the presentation.



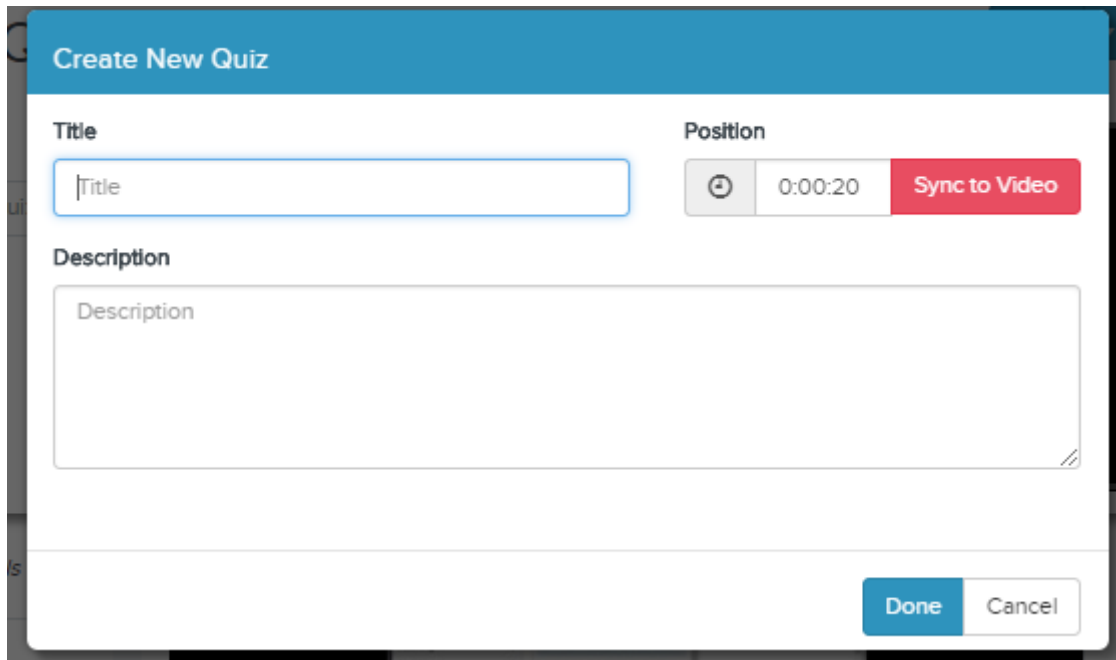
On Edit Quizzes page, click the Play button.



Navigate to a time on the timeline where you'd like to add a question.



Click **Add Quiz**.



Create New Quiz

Title

|Title

Position


0:00:20 **Sync to Video**

Description

Description

Done **Cancel**

You are asked to title this Quiz. (You can have as many quizzes as you'd like during a given presentation. Each quiz can have as few as 1 question.) I have titled mine **Question 1**.



Question 1 **Quiz Settings**

QUESTIONS

+ Add Question

Click **Add Question**.

Question

Question

Description

Description

Type **Points**

Multiple Choice - Single Answer 1

Randomly order answer choices

ANSWERS **Correct?**

⋮ Answer

⋮ Answer

[+ Add Answer](#)

Enter your question and answer selections in the text boxes provided.

Type

Multiple Choice - Many Answers

Multiple Choice - Single Answer

Multiple Choice - Many Answers

True or False

There are three types of questions you can ask: a question with one answer, multiple answers, or a true/false

Question 1

QUESTIONS

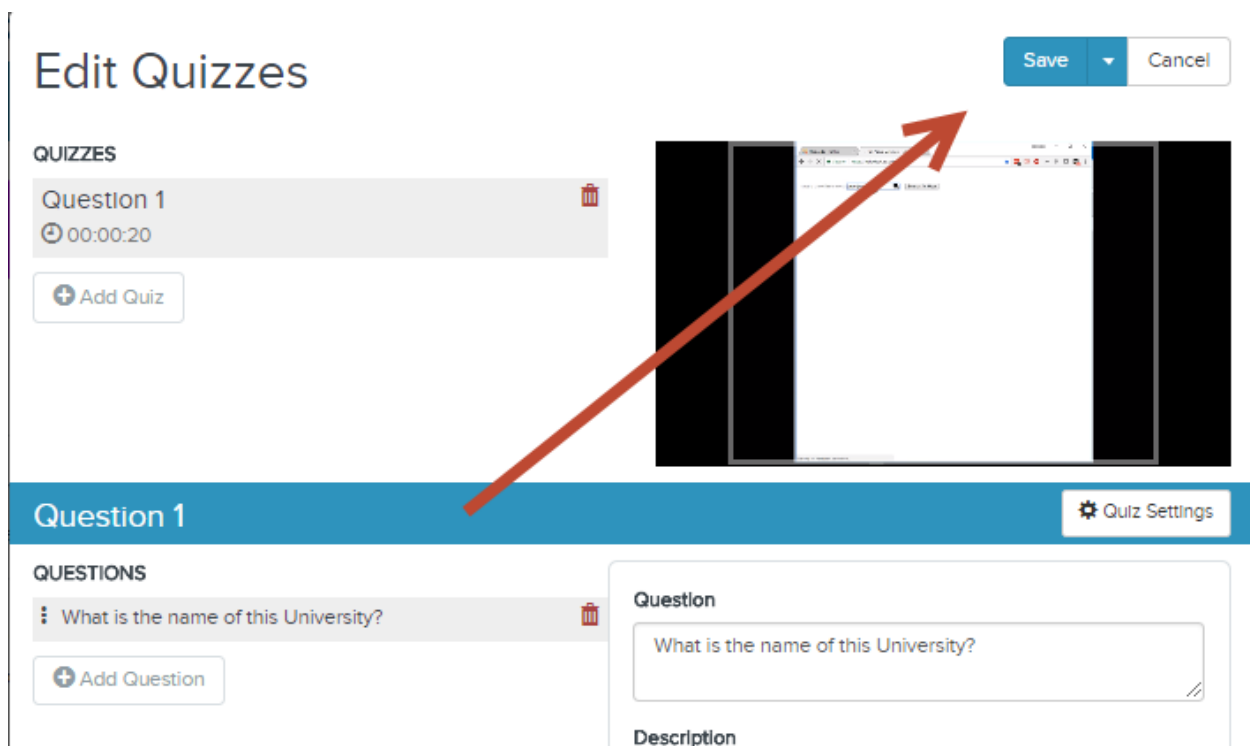
⋮ What is the name of this University?

[+ Add Question](#)

You can add more questions to this quiz by clicking **Add Question**.



To create another quiz in the presentation, jump ahead to where you'd like the next question or set of questions to show up on the Mediasite video and then click **Add Quiz**. You can then enter more questions as outlined in the steps above.



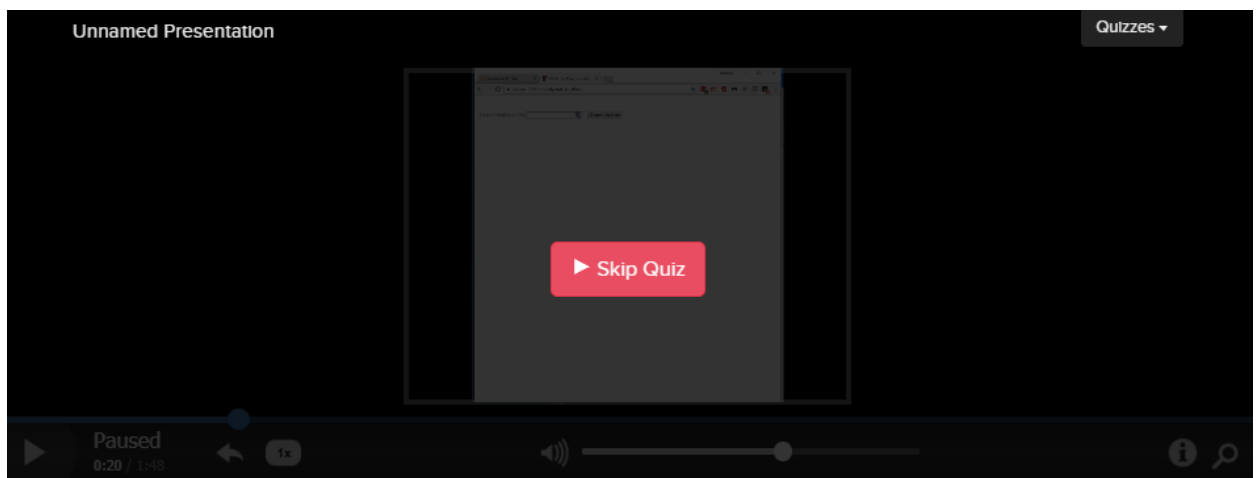
When you are ready, click Save. Click **OK** when it asks you to override Player settings.

Unnamed Presentation

The presentation you are about to view contains interactive quizzes that will appear during playback. Please be sure to review and submit your answers at the end of the presentation.

Let's Go

Now when you watch the video link, the Title that you entered at the beginning will appear. Click **Let's Go** to watch your presentation.



Question 1

1 questions

Take Quiz

When students arrive at the point in the video that you added your first quiz, they will see the Quiz window pop up like this.

- [? Edit Quizzes](#)
- [Edit Polls](#)
- [Q & A Forum](#)
Disabled

To view students responses click on Analytics and then the Quiz tab.

Back to Presentation Details

Presentation Analytics

Dashboard Who's Watching Quiz

Quiz Results

Download Report

Filter

User	Taken	Submitted	Done	Score	Time Watched	Coverage	
rgs0007	Jan 9, 2019 2:59 PM			0.0%	00:01:55	00:01:55 (3.2%)	Details

Click on Download Report and then **Excel** and a spreadsheet will download featuring all of the student responses.

It is worth noting again that at this time, there is no direct integration of answers from Mediasite Quizzes into Canvas. To enter Quiz results into your Canvas gradebook, you will manually need to enter responses.