

Behavioral Health Support ECHO

for Uvalde and surrounding communities

Join our ECHO session: Thurs, August 4, 2022, 12:00-1:00pm CT

Register: <https://tinyurl.com/bhsechosession4>

Didactic: "How Can You Help Others Following a Community Crisis?"

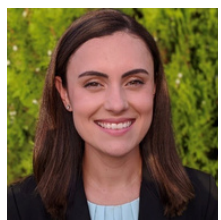
Presenter:



Stacy Ogbeide, PsyD, ABPP, CSOWM

Clinical Health Psychologist
Associate Professor
Director of Behavioral Health Education
UT Health San Antonio

Facilitator:



Angela Reilly, MS

Research Assistant
Rural Telementoring Training Center
UT Health San Antonio



Free CME Credit

Accreditation: The University of Texas Medical Branch is accredited by the Accreditation Council for Continuing Medical Education (ACCME) to provide continuing medical education for physicians.

Credit: The University of Texas Medical Branch designates this live activity for a maximum of 1.0 AMA PRA Category 1 Credits™. Physicians should claim only the credit commensurate with the extent of their participation in the activity.

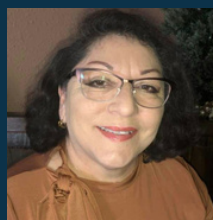
Disclosure: There are no relevant disclosures.

Panelists:



Waridibo Allison, MD, PhD

Vice President of Health Policy
Director, Center for Health Policy
Director, Rural Telementoring Training Center
The University of North Texas
Health Science Center at Fort Worth



Ludivina Hernandez, CHW-I

Community Outreach Coordinator
Center for Research to Advance Community Health (ReACH)
UT Health San Antonio



April Wiechmann, PhD

Clinical Neuropsychologist
Clinical Medical Director, Geri-Psych
Medical Director, Integrated Behavioral Health
The University of North Texas
Health Science Center at Fort Worth

Registration



<https://tinyurl.com/UNTHSC-Behavioral-Health-ECHO>



info.CHP@unthsc.edu