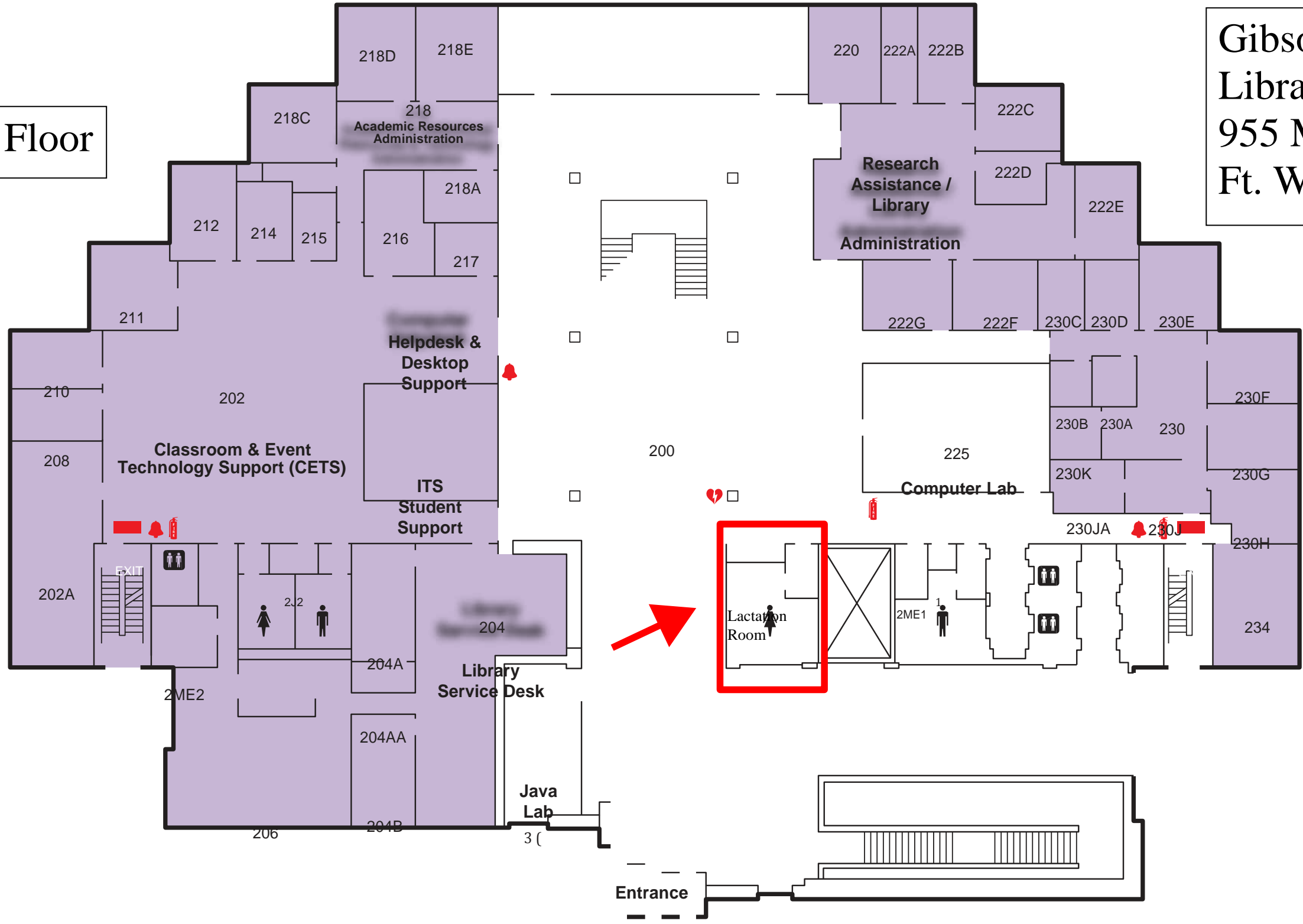








Library 2nd Floor

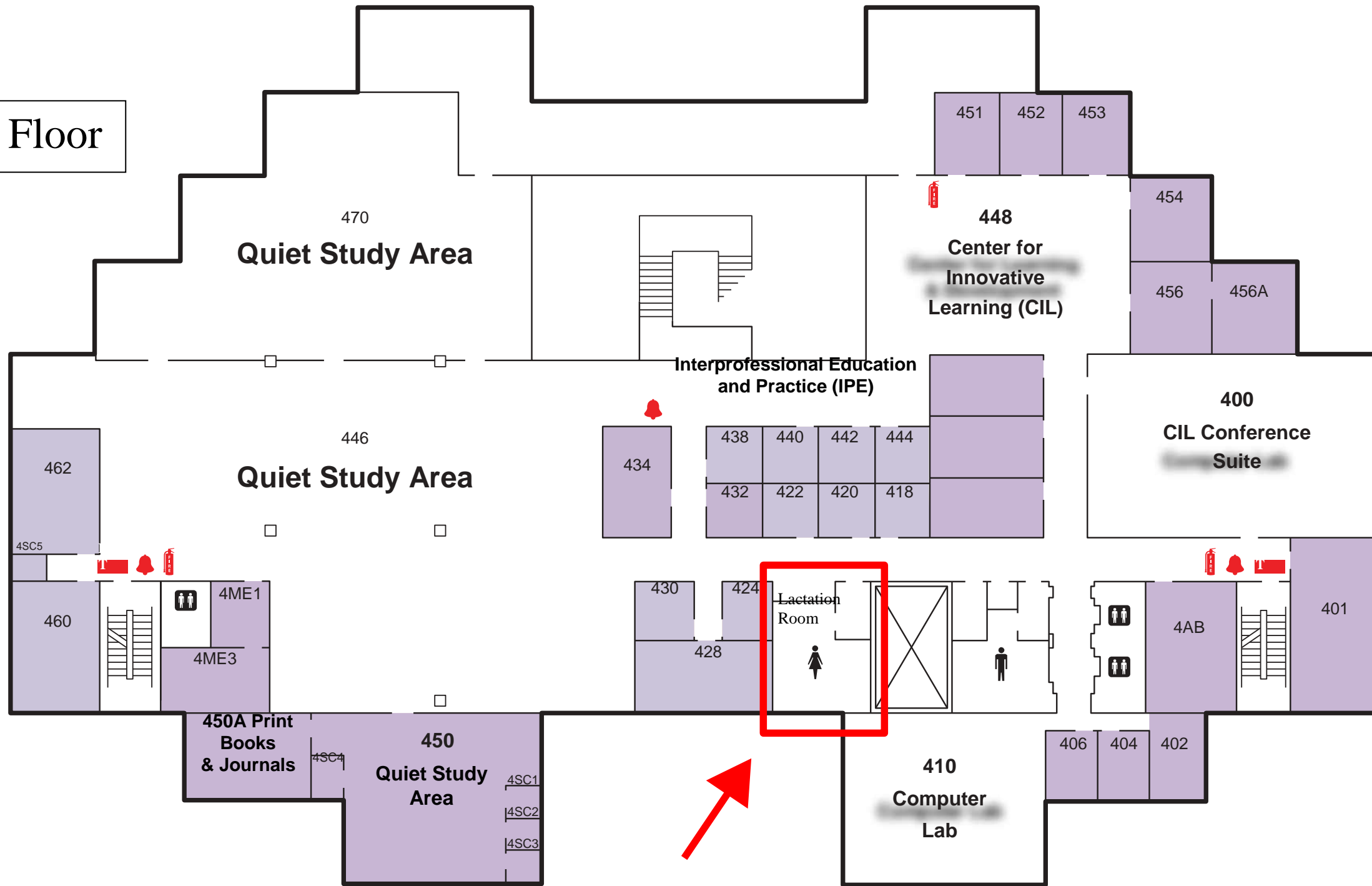
Gibson D. Lewis
Library
955 Montgomery St,
Ft. Worth, TX, 76107



Level 2

	Faculty/Staff Areas		Fire Alarm	
	Elevator		Fire Extinguisher	
			Automated External Defibrillator	

Library 4th Floor



Level 4

- Faculty/Staff Areas (light blue square)
- Fire Alarm (red bell icon)
- Fire Extinguisher (red fire extinguisher icon)
- Restroom (black restroom icon)
- North Arrow (circle with 'N' and arrow)

Study Rooms
Viewing Rooms

Other Lactation Rooms:

IREB: 3430 Camp Bowie Blvd.

IREB 1T3 & 3T6, adjacent to 1st and
3rd floor restrooms