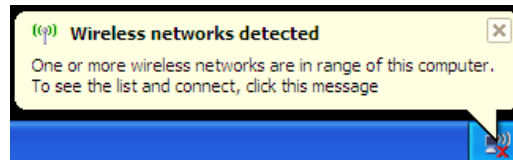
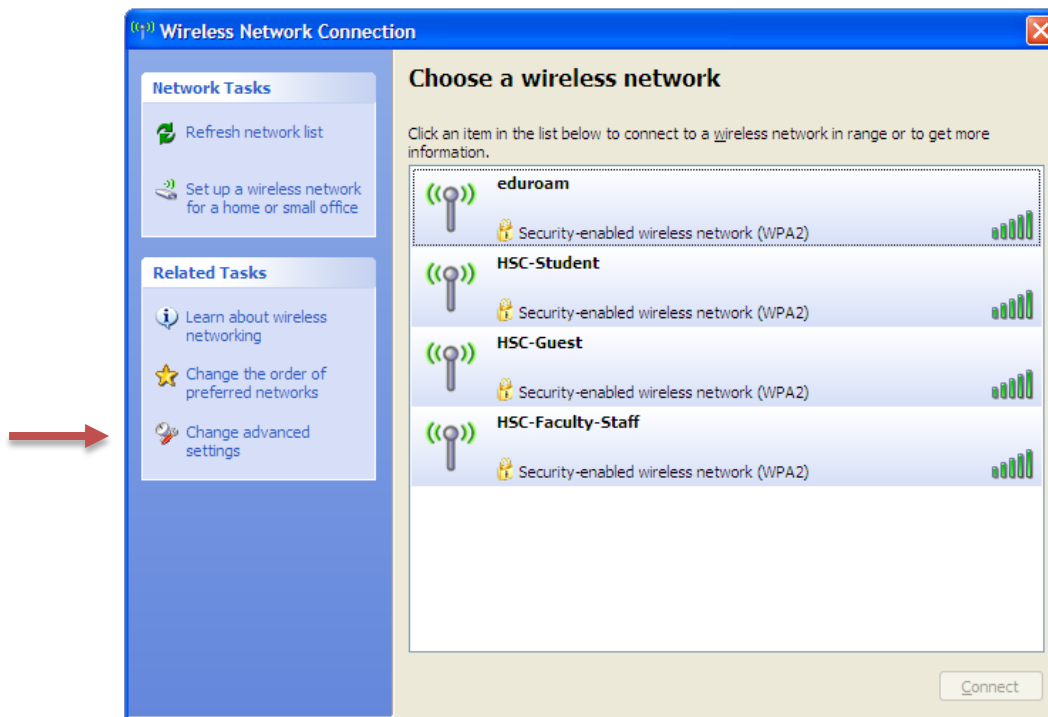


## Connecting to UNTHSC Wireless (Windows XP)

If your computer does not automatically connect to HSC-Faculty-Staff you will need to manually configure the connection. Right click on the wireless network icon in your task bar and select **View Available Wireless Networks**.



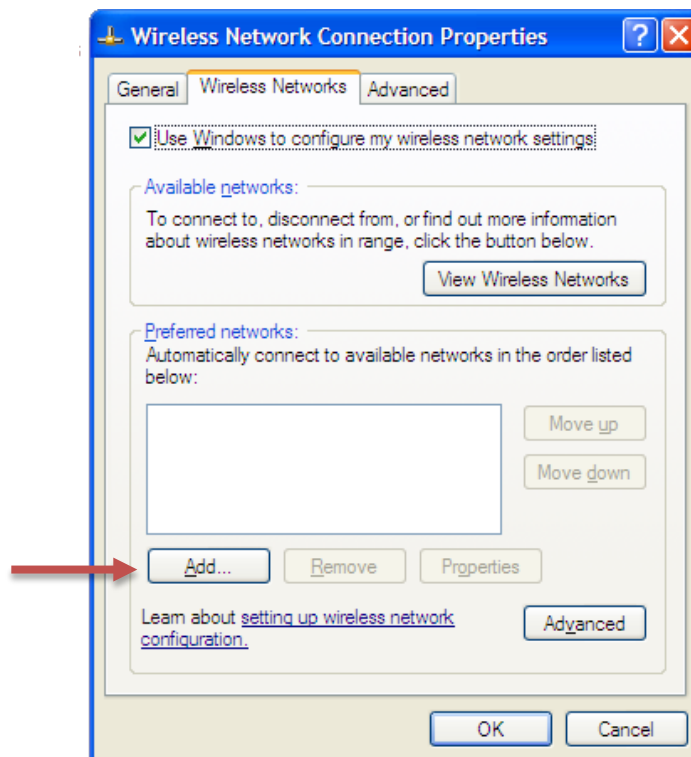
The Wireless Network Connection window will appear. Click on the **Change advanced settings** link in the left hand navigation menu.



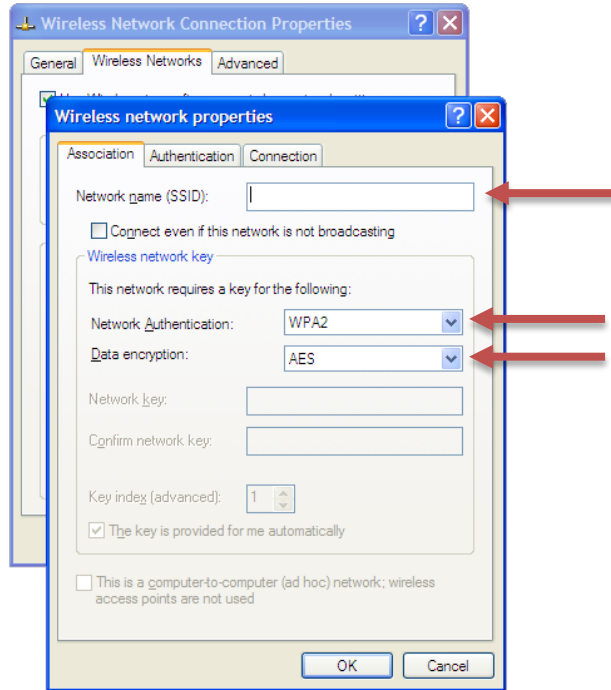
Click on the **Wireless Network** tab when the Wireless Network Connection Properties window opens.

If you do not see any of the UNTHSC wireless networks in the **Preferred networks** window please click the **Add button**.

If one of the UNTHSC wireless networks are already listed please highlight it and click the **Remove button** to remove the listed network(s). Click the **Add button** to create a new connection.

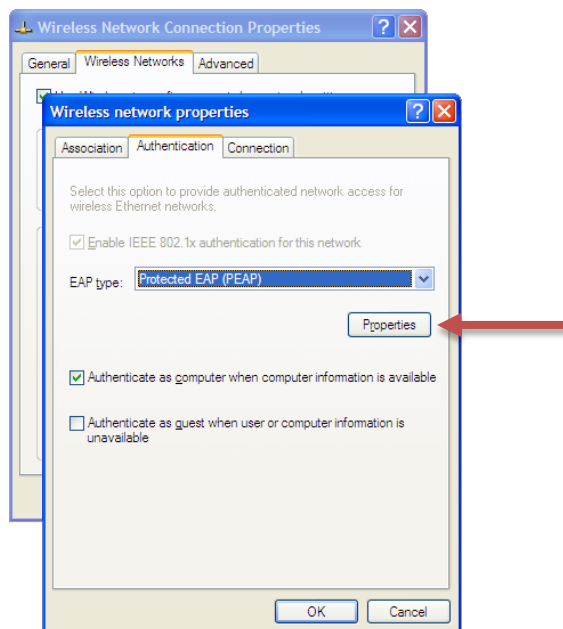


The Wireless network properties window will open. Enter the name of the network you wish to connect to in the **Network Name (SSID)** field. Then verify that the rest of your settings match the window below.



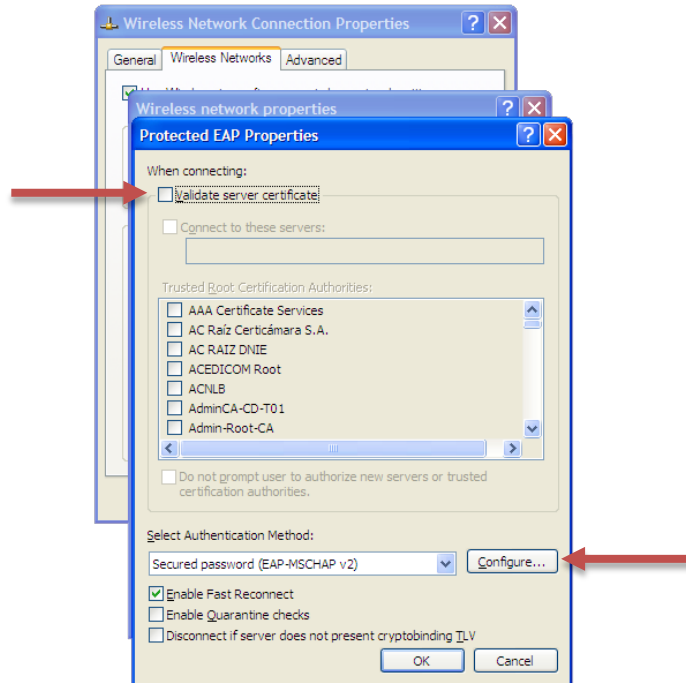
After verifying the above settings click on the **Authentication tab** at the top of the window.

Select **Protected EAP (PEAP)** in the EAP type drop down menu then click the properties button.



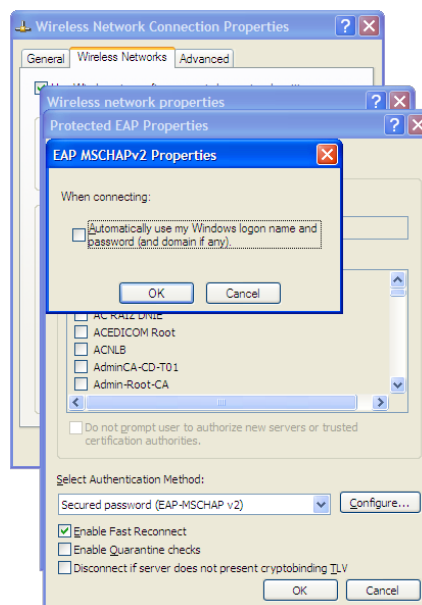
Uncheck the **Validate server certificate** box in the Protected EAP Properties window.

Make sure **Secured Password (EAP-MSCHAP v2)** is selected in the Select Authentication Method drop down and click the **Configure** button.

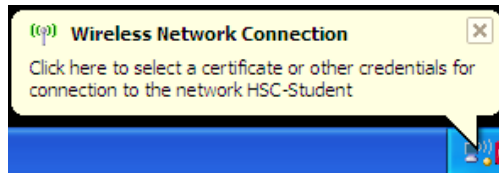


Uncheck the **Automatically use my Windows logon name and password** box and click OK.

Click OK on the following windows to accept the changes made.



If the steps were followed correctly you should now see the following message.



Clicking on the balloon message will present you with the Enter Credentials window.

Log in using your EUID/Password and UNTHSC in the Logon domain field.



If your login attempt was successful you should see the below message.

